



ADP WORKFORCE NOW EXTENDED PROFILE



OVERVIEW

Aimed at mid-sized companies (50-1,000 employees), ADP Workforce Now provides payroll, HR, time tracking, and benefits management in a unified platform with options for additional customizations.

CORE FUNCTIONALITY

ADP Workforce Now's single-platform approach reduces administrative overhead, keeps you compliant with evolving regulations, and gives your team on-demand access to:

- **Payroll and tax management:** Run payroll in minutes, preview and correct errors before submission, handle multi-state tax filings automatically, and access a library of built-in reports.
- **Digital record keeping:** Store and search employee documents securely, maintain audit trails, and set role-based access controls for sensitive files.
- **Benefits administration:** Configure plans, manage open enrollment online, connect directly to carriers, and track ACA compliance through a single dashboard.
- **Workforce management:** Capture time via desktop, mobile, or badge readers; process time-off requests; build schedules; and feed hours directly into payroll.
- **Enhanced HR tools:** Automate new-hire and termination workflows, maintain I-9 and policy acknowledgements, and empower employees with self-service portals for pay statements, benefits, and task reminders.
- **Analytics and insights:** Generate custom reports on overtime, turnover, and labor costs; set thresholds for alerts; and share dashboards with leaders to drive data-informed decisions.

Backed by ADP's 75-year heritage in payroll and compliance, it streamlines routine tasks and keeps businesses current with ever-changing regulations.

ADP WORKFORCE NOW PRICING

The solution scales with business needs through three core editions: Select, Plus, and Premium, each built around a pay-per-employee-per-month model and optional extras.

Download the extended software profile for a breakdown of each tier,



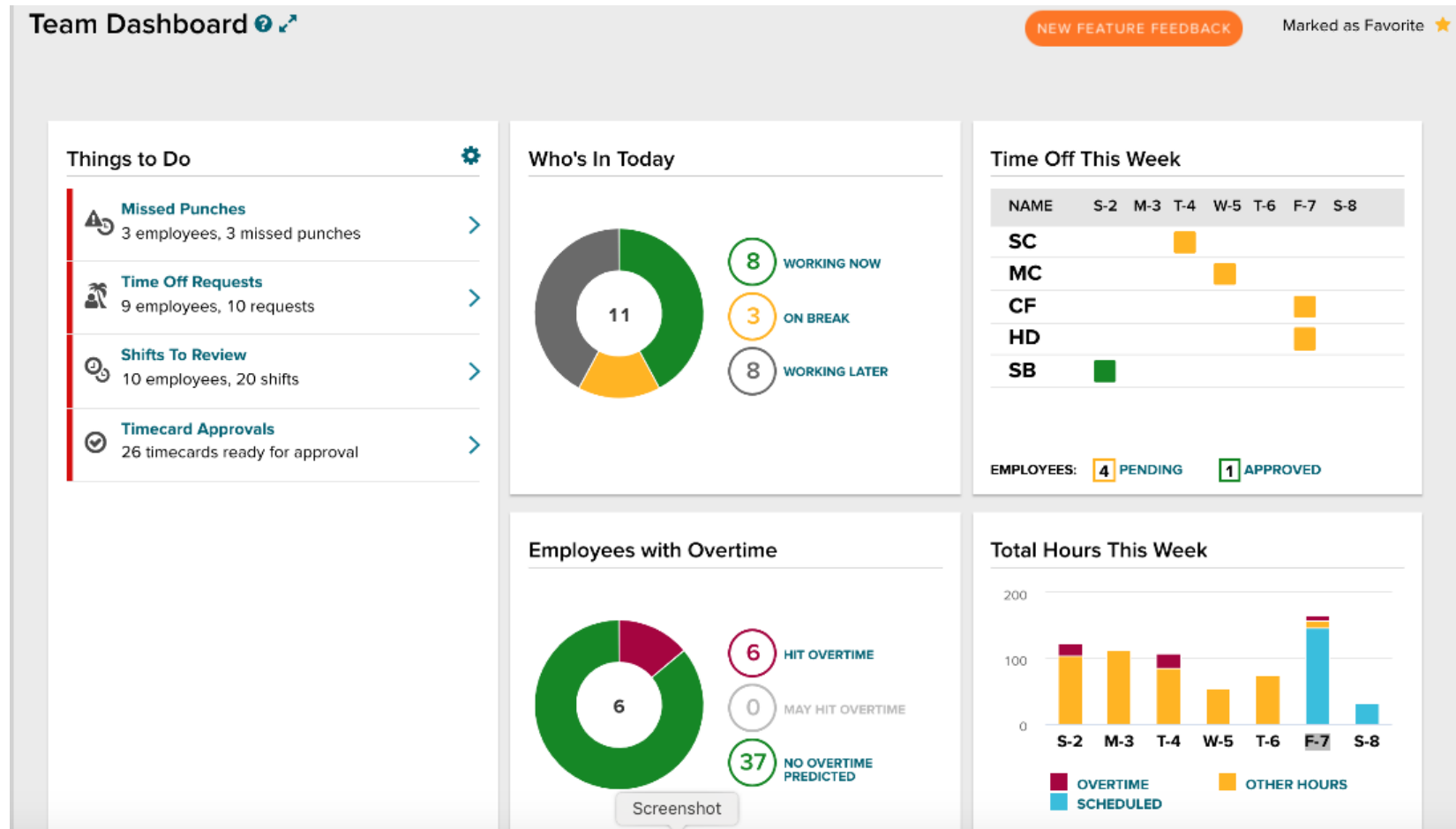
SOFTWARE SPECIFICATION

OVERVIEW	
PRODUCT NAME	ADP Workforce Now
SOFTWARE FEATURES	
ABSENCE MANAGEMENT	✓
BENEFITS ENROLLMENT	✓
COBRA	✓
COMPENSATION	✓
COMPLIANCE	✓
DISCIPLINARY ACTION	✗
EMPLOYEE SELF SERVICE	✓
FMLA	✓
HEALTH & SAFETY	✓
MANAGER SELF SERVICE	✓
ON & OFF BOARDING	✓
PAYROLL	✓
PERFORMANCE MANAGEMENT	✓
RECRUITMENT	✓
REVIEWS	✓

SOCIAL NETWORKING	✗
SUCCESSION MANAGEMENT	✓
TIME & ATTENDANCE	✓
TRAINING & SKILLS	✓
VACATION & SICK LEAVE	✓
WORKFLOW	✓
WORKFORCE ANALYTICS	✓
TRAVEL & EXPENSES	✗
ORGANIZATION SIZE	
ENTERPRISE (1000+ EMPLOYEES)	✗
MEDIUM (251-1000 EMPLOYEES)	✓
SMALL (1-250 EMPLOYEES)	✗
PLATFORM	
CLOUD	✓
INSTALLED	✗
PRODUCT INFO	
MODULAR	✓
MULTI LANGUAGE	✓
MULTI CURRENCY	✓
CUSTOMIZABLE	✓
FURTHER INFORMATION	
PRICING	3 pricing tiers (\$23-30 PEPM. Select, Plus (everything in the select package, + benefits administration), & Premium (everything in the Plus package + workforce management).



SOFTWARE SCREENSHOTS



Pay & Tax Statements

My Pay

Year: 2022 (S)

Date	Take Home	Gross
Mar 4, 2022	\$3,685.92	\$9,576.92
Feb 18, 2022	\$3,651.53	\$9,576.92
Feb 4, 2022	\$3,651.53	\$9,576.92
Jan 21, 2022	\$3,651.53	\$9,576.92
Jan 7, 2022	\$3,651.53	\$9,576.92

Current YTD Compare

Mar 4, 2022

Take Home: **\$3,685.92**

Hours: 8 | Gross: \$9,576.92

Typical Regular: 8 | \$9.57

Holiday: 8 | --

My Pay

March 4, 2022

Take Home: **\$3,685.92**

Hours: 8 | Gross: \$9,576.92

[View Details](#)

Statements & Activity

Date	Take Home	Hours	Gross
Mar 4, 2022	\$3,685.92	80	\$9,576.92
Mar 1, 2022	\$3,651.53	80	\$9,576.92

Tax Statements

Come back here to see your tax information.

Benefits Dashboard

Open Enrollment

310 New Enrollments

10 Employees

17 Companies

[View Details](#)

Self-Service Registration

Enrollment Actions

New Hire Enrollments

Pending HR Tasks

Smart Links

Benefits Invoices

COBRA Events

Review: Assessment

3.88 Meets Job Requirements

4.65 Sometimes Exceeds Job Requirements

Digital Business Certification

Weighted at 100% | Personal Goal | Pass

VIEW / UPDATE PROGRESS

COMMENTS INCLUDED IN THE REVIEW

Introduction

Rating Scale

GOALS

GOAL 1

INSTRUCTIONS

QUESTIONS

COMPLETIONS

Overall Comments

Summary

Andersen, Todd | Contributor

Borner, Edward | Contributor

Dearborne, Susan M | Additional Reviewer

Employee Response

Your Response

Rating: Exceeds Job Requirements

Comments: [Previous](#) [Cancel](#) [Save](#) [Next](#)

Questions:

Question 1: I am really enthusiastic about the mission of my company. Average Response: Strongly Agree (4.35)

Department	Total Score	Score Distribution	Average	Favorable	Unfavorable
0000 - Call Center	1000		4.25		
0002 - Tech Sup...	350		4.31		
0005 - Admin...	450		4.10		
0004 - Support...	450		4.00		
0006 - Marketing	400		3.84		

Question 2: At work, I rarely know what's expected of me. Average Response: Neutral (3)

Question 3: Average Response: (2)

Question 8 of 16

I received helpful background information on the company's history, products, & services.

[Strongly Disagree](#) [Disagree](#) [Neither Agree or Disagree](#) [Agree](#) [Strongly Agree](#)

[Prev](#) [Next](#)